

**Develop
Classification
Awareness**

Smart Garbage Can recycle bottles

Team member

**张凌霄 (085) 林广兰 (006)
申琳琳 (054) 徐颖南 (115)**

Contents



1. Problem & Solution

2. Industrial chain

3. Product Description

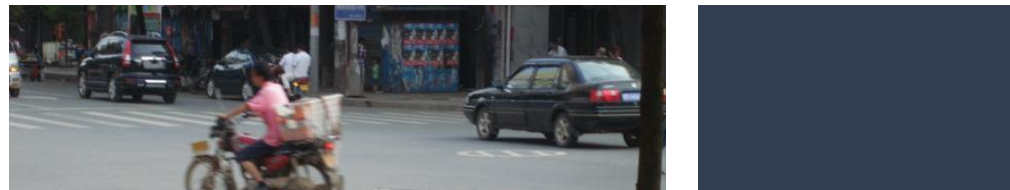
4. Business model

5. Future

PART

1

**Problem
&
Solution**



classified





Clean Street

Classified Garbage

Smart garbage can

Why bottle firstly?

- **One of main rubbish & Easy to achieve**
- **High recycling rate → High economic value**

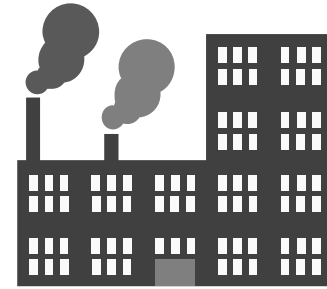
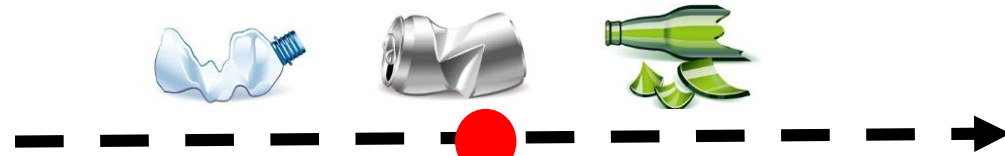


**PART
2**

**Industrial
chain**



**Beverage factory
(Upstream)**



**Waste disposal plant
(Downstream)**



**Smart garbage can
(Midstream)**



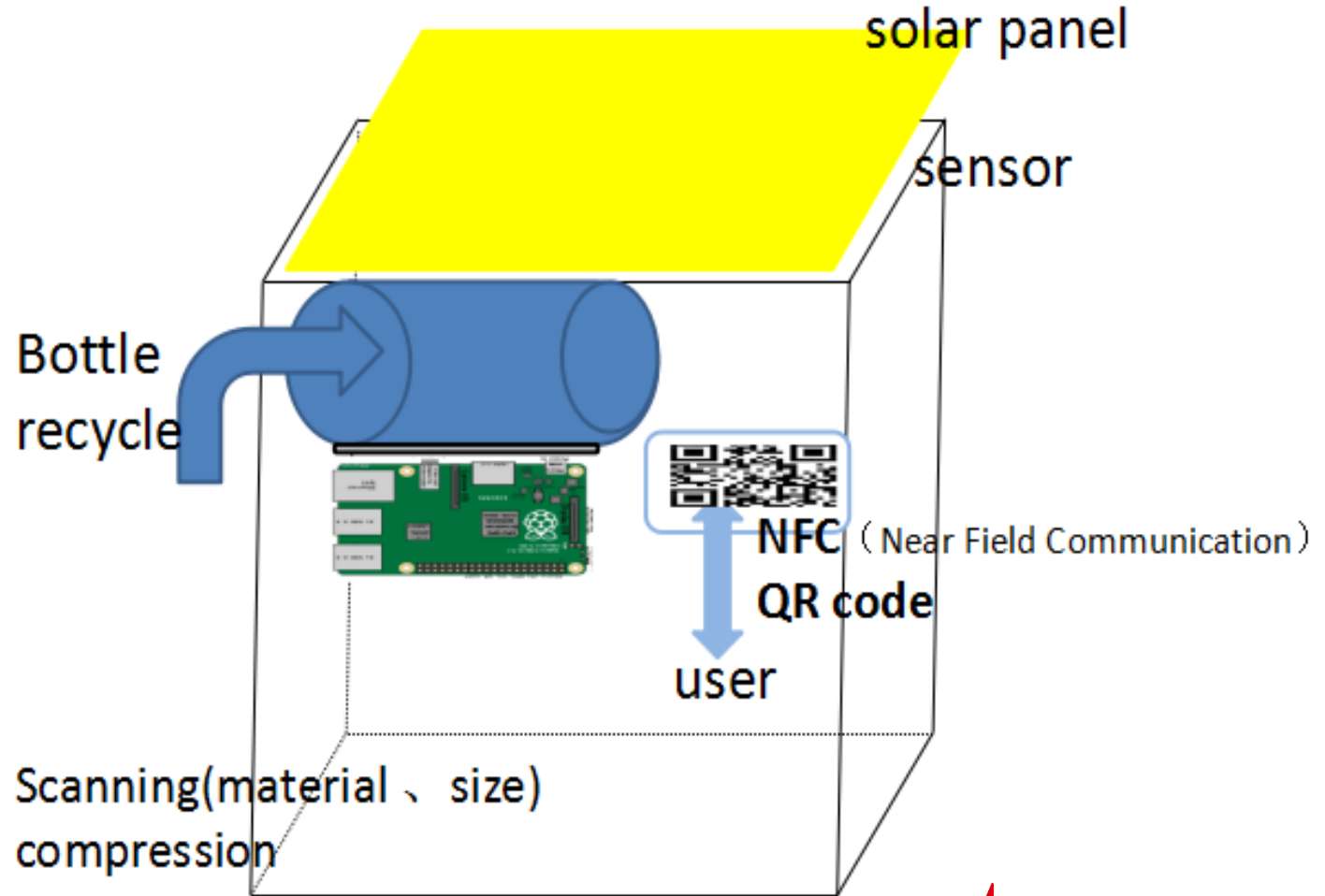
PART

3

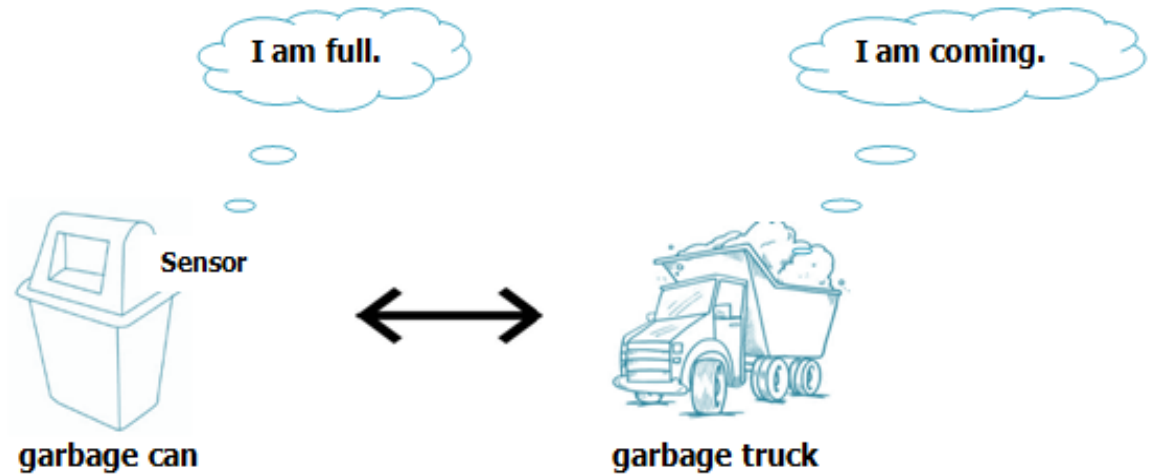
**Product
Description**

function

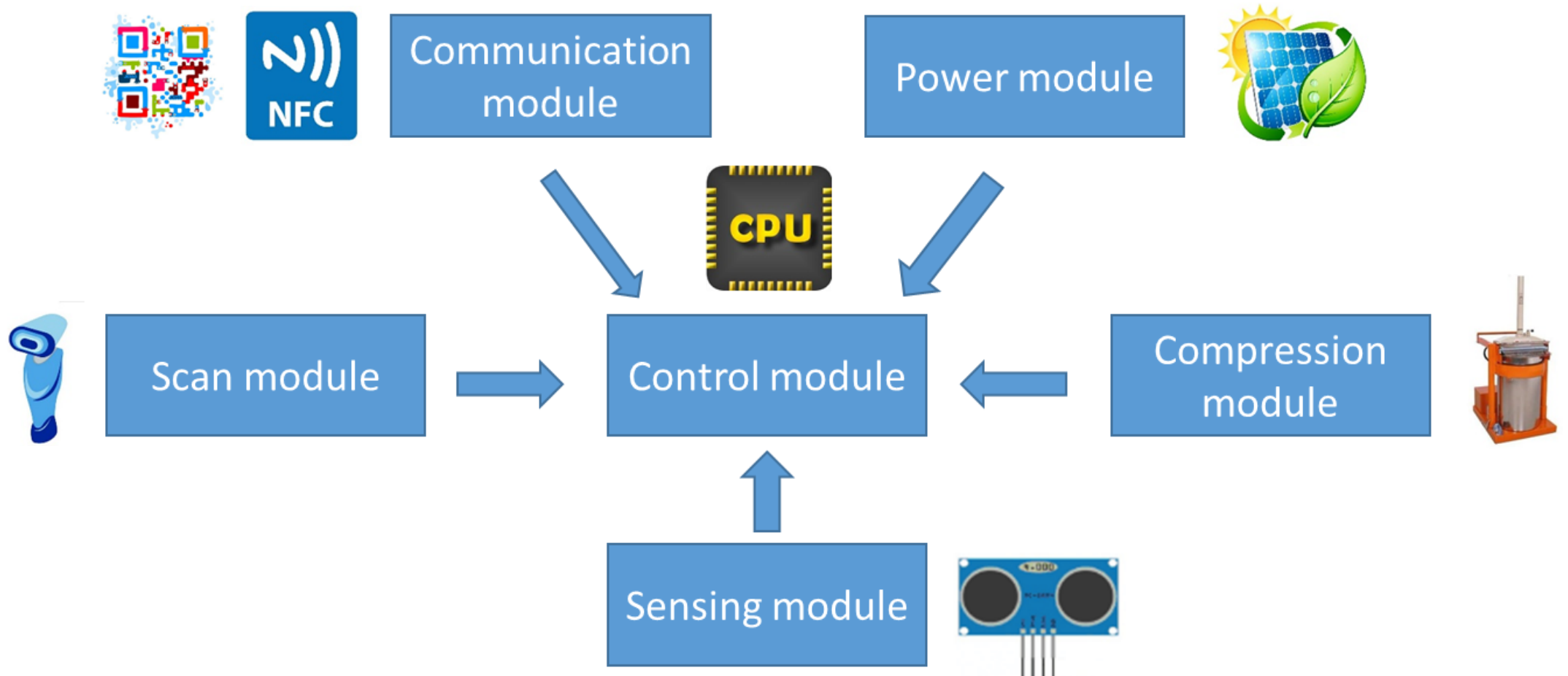
- Power supply module (solar panel)
- Sensing module (sensor)
- Communication module (NFC, QR code)
- Scan module (size)
- Compression module



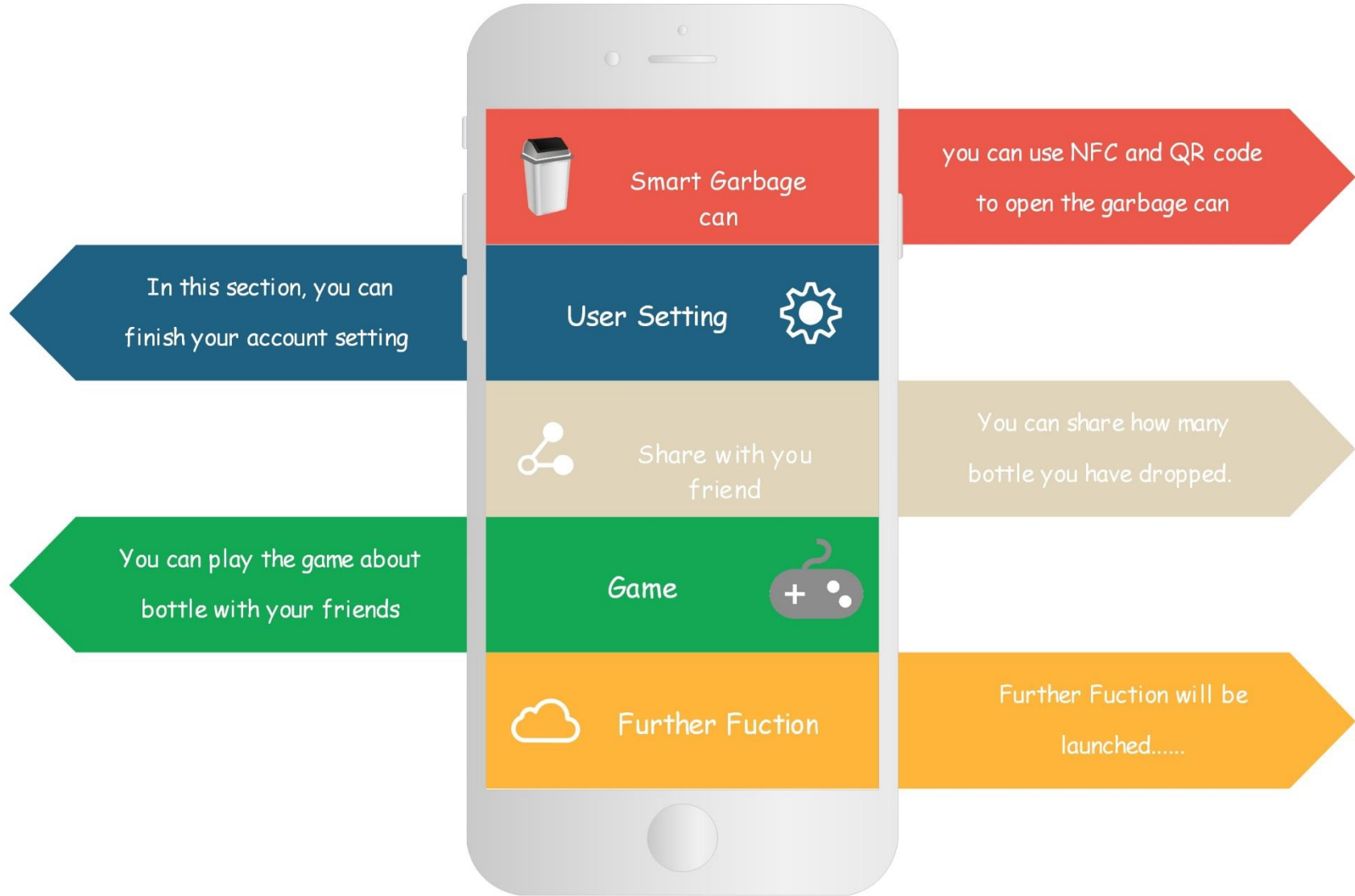
Over-flow Flag



Functional block diagram



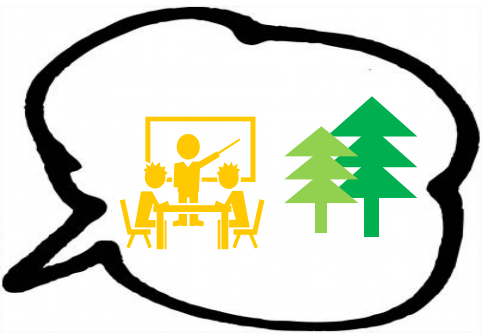
Platform



PART

4

**Business
model**



NGO

Brand

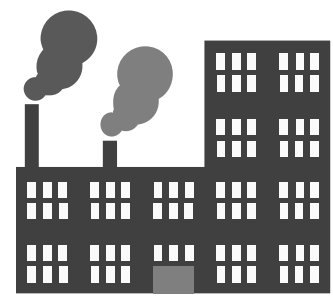
Brand



\$/gift/game



**smart
garbage
can**



**garbage
factory**



**Open
FIESTA**



supermarket

地铁站



subway satation

皇岗海关

皇岗口岸管理处

皇岗口岸停车场

trash can



bus station



railway station

黄岗口岸停车场

皇岗口岸

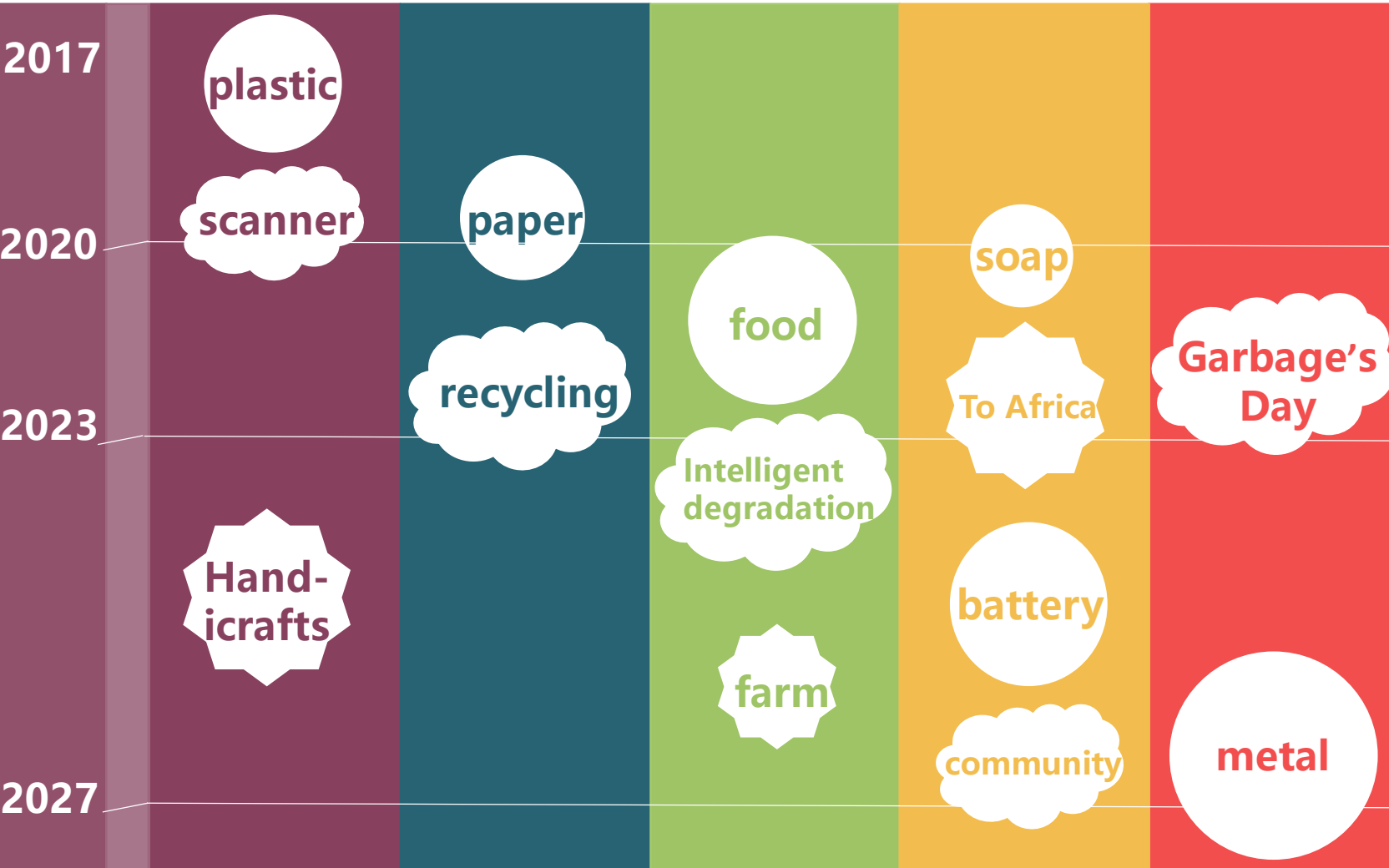


PART

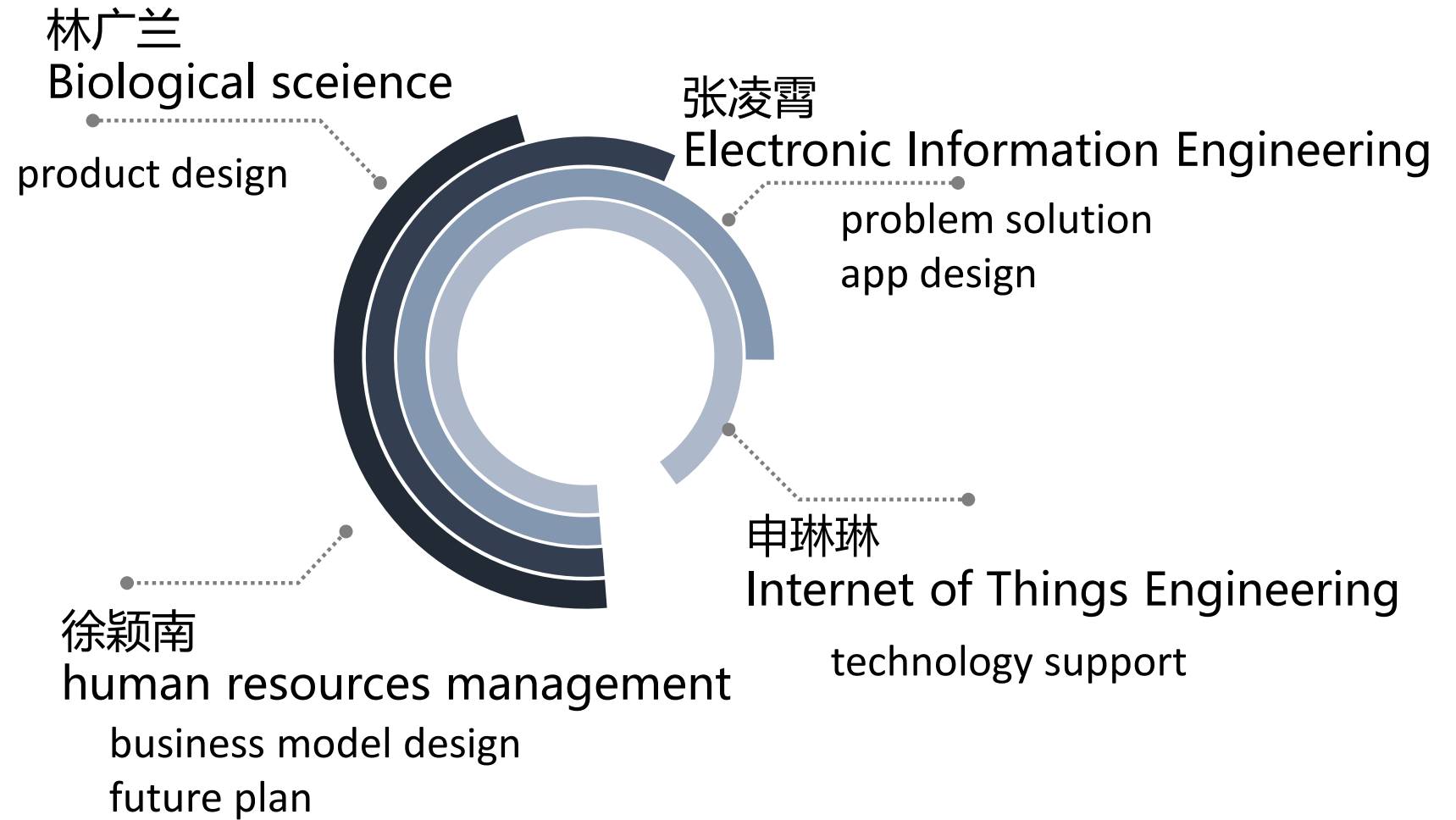
5

Future

System



Team member



**Smart
Garbage
Can
recycle bottles**

**THANK
YOU!**

Team member

张凌霄 (085) 林广兰 (006)

申琳琳 (054) 徐颖南 (115)